



# Rwanda a Post-Conflict Society

Claudia Sanchez Bajo, PhD

Gastprofessorin des FB 05

**The contribution of cooperatives to peace and sustainable development**

# Rwanda, a pos-conflict society

## The contribution of cooperatives to peace and sustainable development

### Background

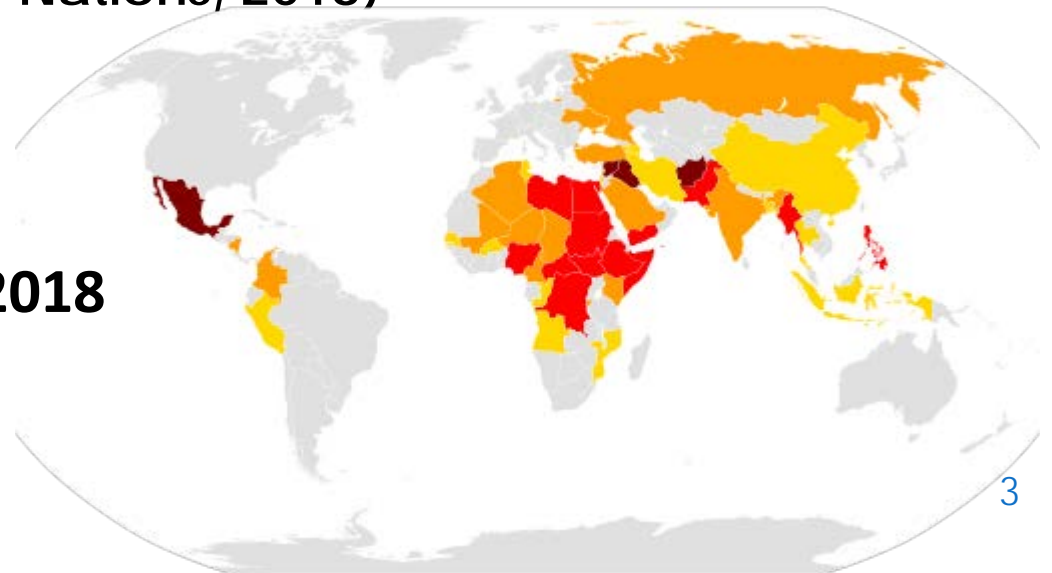
- Africa
- History
- Trauma of Genocide 1994  
(Massacres 1959, 1963, 1972)
- Destruction and breakdown
- Reconstruction and Rebuilding



# SOME FACTS: FOOD SECURITY, POPULATION GROWTH AND ARMED CONFLICTS

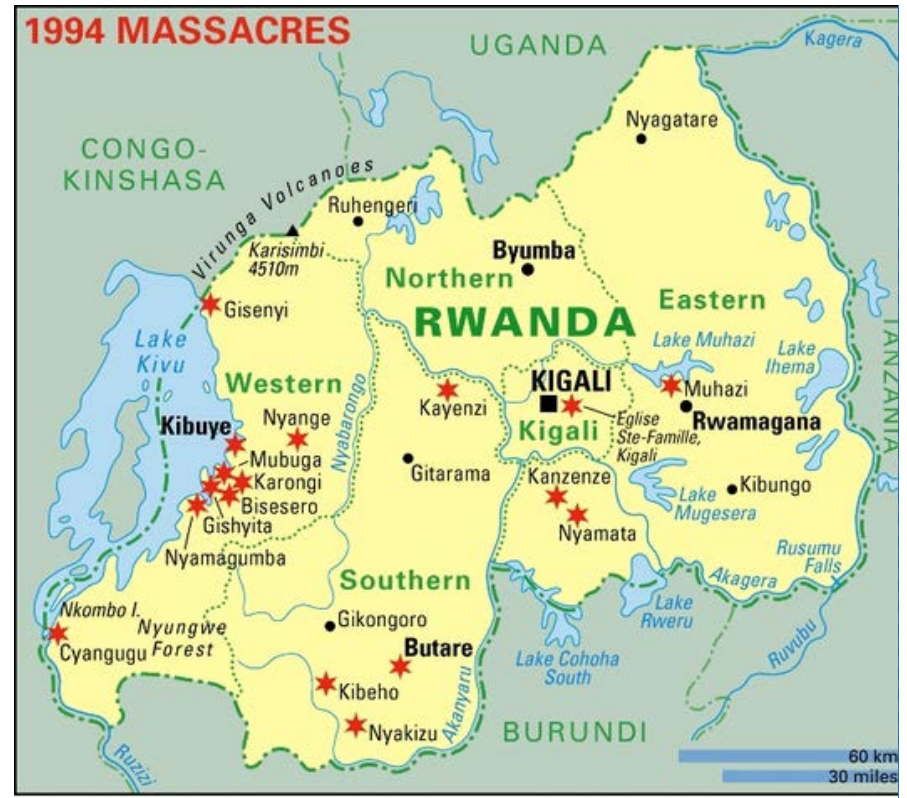
- 27.4% of population in Africa severely food insecure in 2016, 4 times as high as any other region. **RISING**, in sub-Saharan Africa. From 2014 to 2016, increased by about 3% (FAO, 2017).
- > 50% of global population growth between 2018 and 2050 will occur in Africa (United Nations, 2018)

## Ongoing armed conflicts in 2018

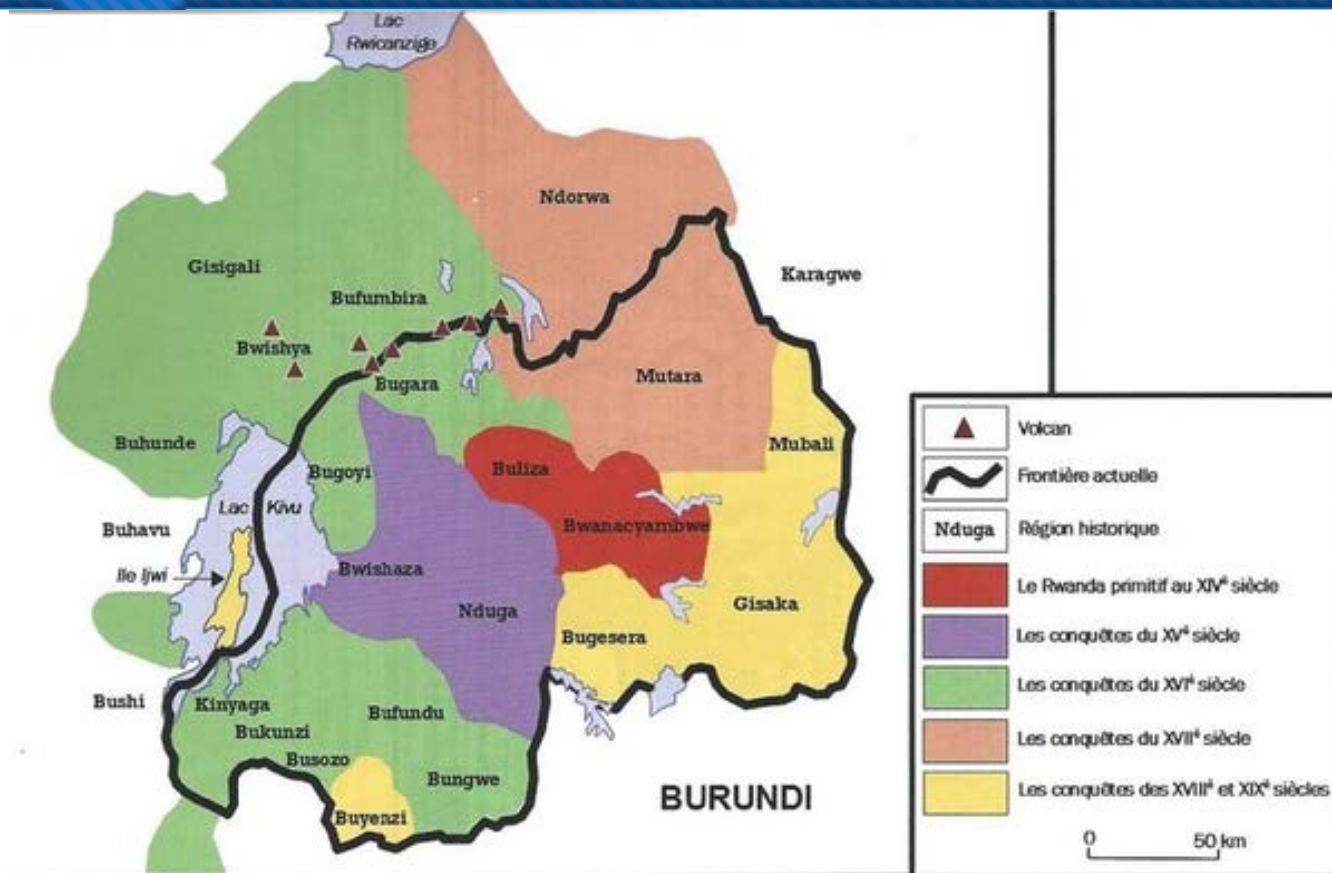


# Map of 1994 massacres

- Causes :
- Ethnicity?
- Structural?
- Conditions versus Threshold for over-determined relations
  - Kamola (2007 TWQ)
  - Braeckman (2014 Nevicata books)
  - Turshen (2001 Zed Books)

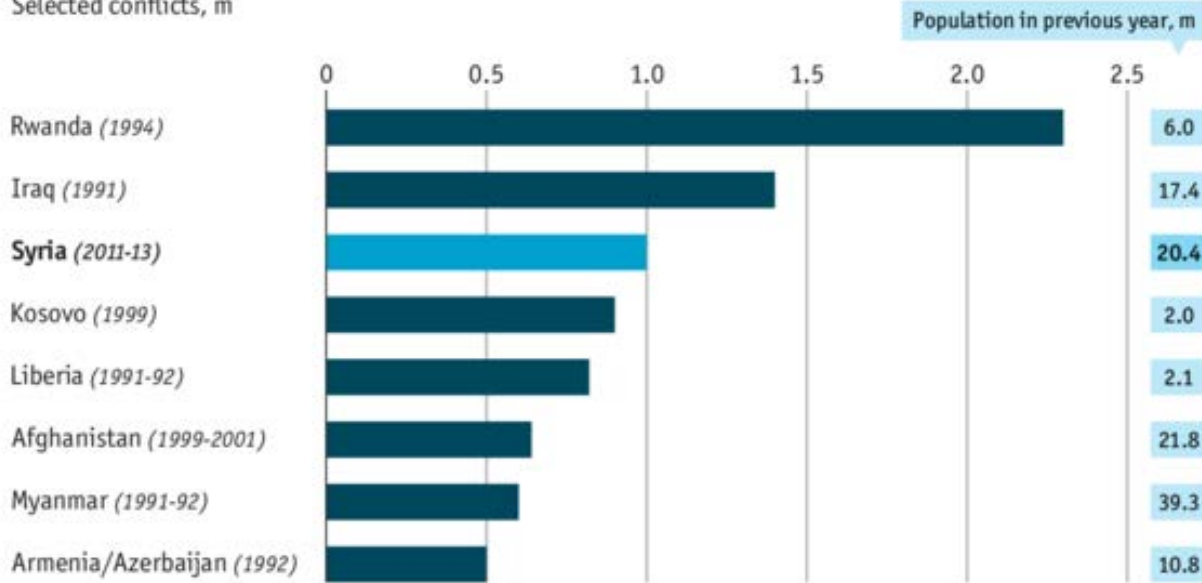


# Kingdom of Rwanda 1081 to 1899 - 1961



## Refugees displaced by war

Selected conflicts, m



Sources: UNHCR; UN; press reports

[Economist.com/graphicdetail](http://Economist.com/graphicdetail)

Refugee flows  
compared  
2013 UNHCR

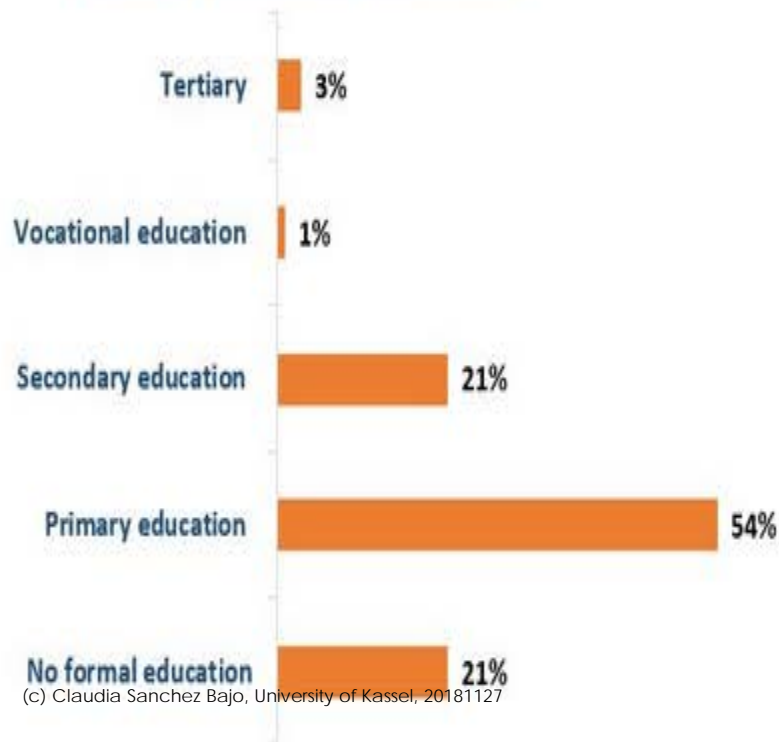
[https://cdn.static-economist.com/sites/default/files/images/2013/03/blogs/graphic-detail/20130309\\_gdc205.png](https://cdn.static-economist.com/sites/default/files/images/2013/03/blogs/graphic-detail/20130309_gdc205.png)

Fear and Mistrust  
Managing dissent  
Broken systems  
Loss of capital (all types)  
Hatred, revenge and vicious cycles



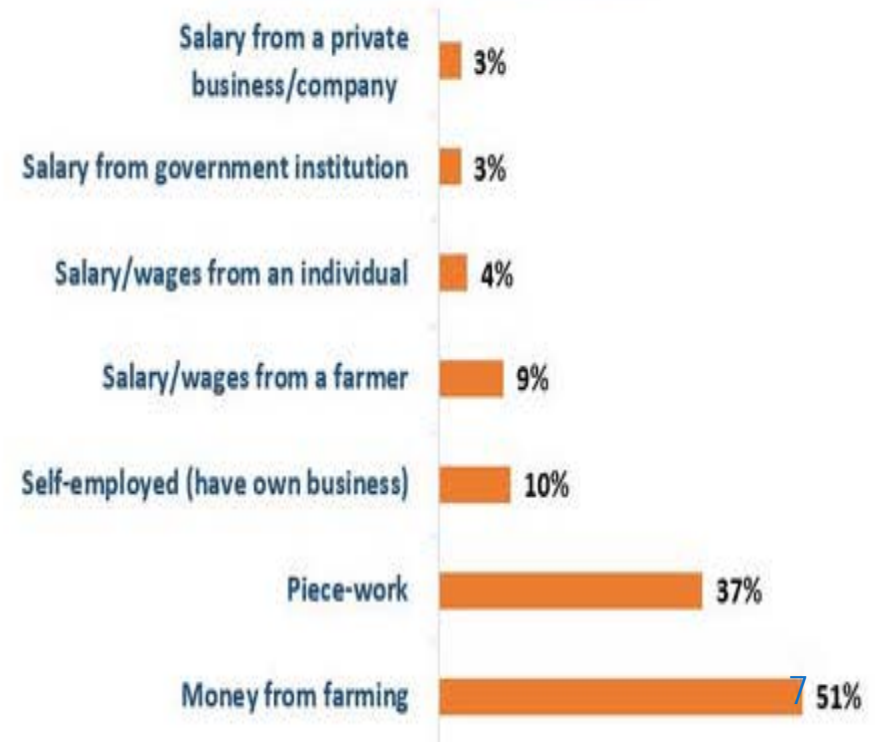
# Majority in farming and rural, more than half with primary education : 12.5 mill

### Levels of Education Distribution

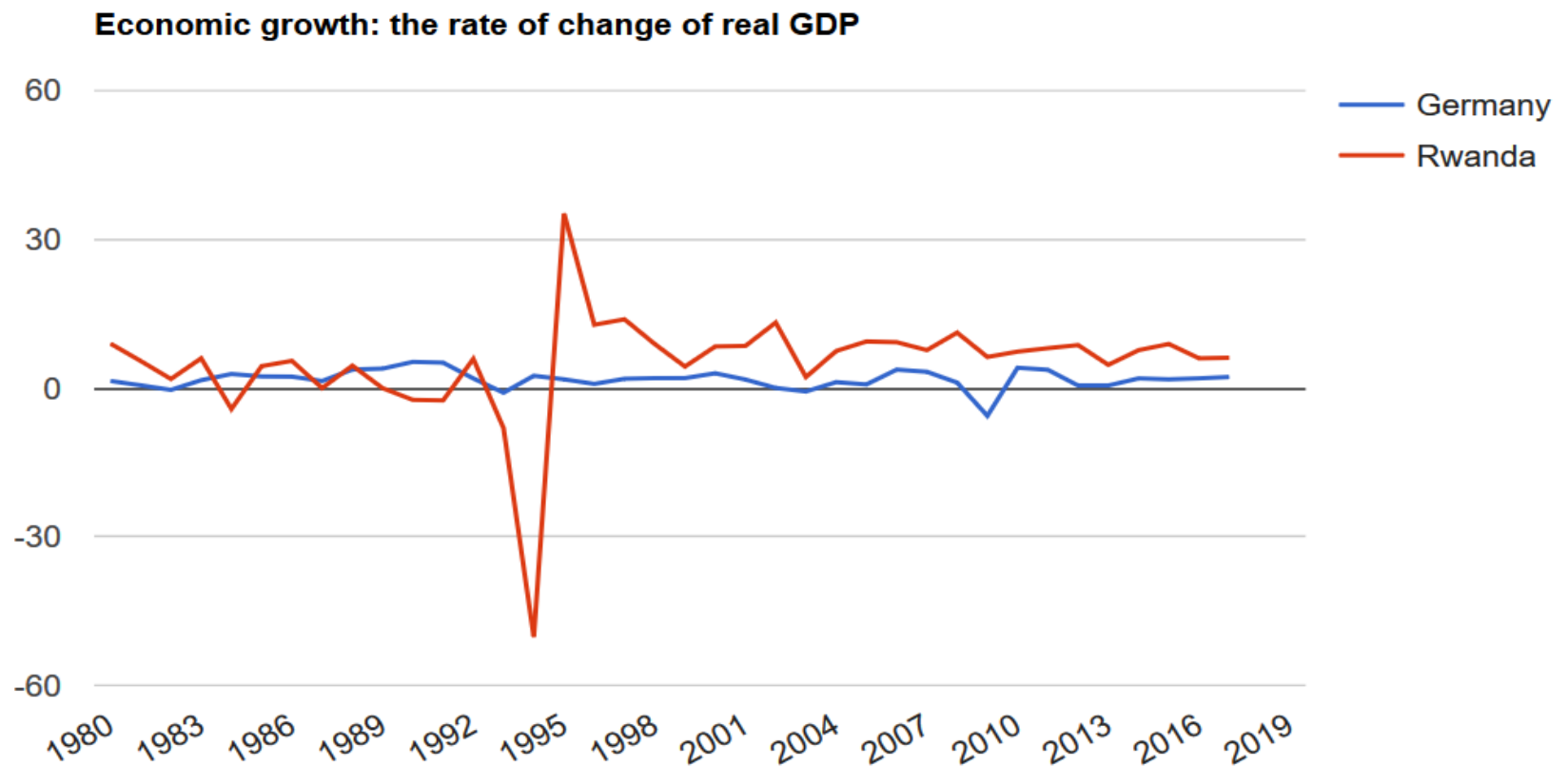


(c) Claudia Sanchez Bajo, University of Kassel, 20181127

### Source of Income Distribution

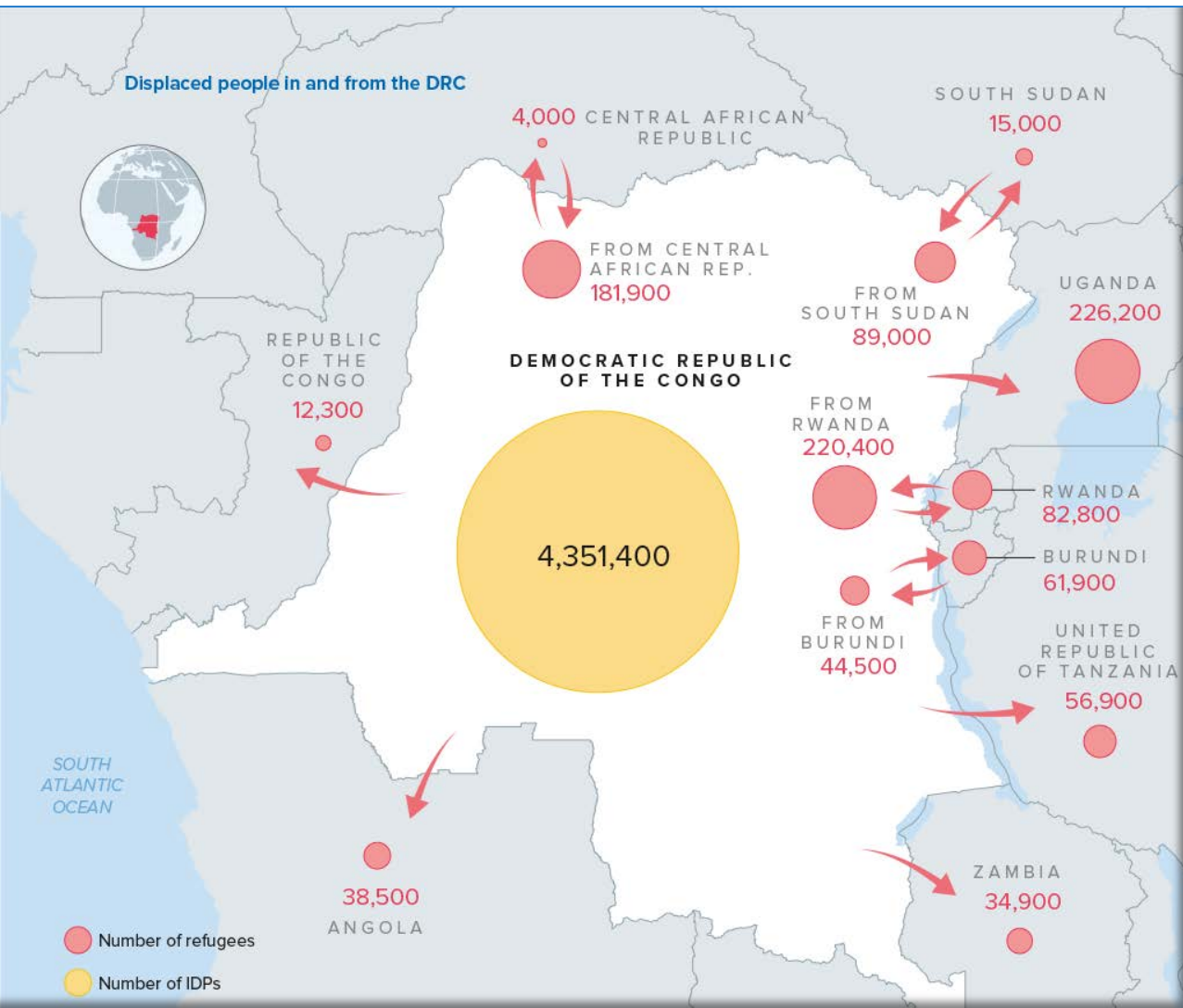


# GDP rate of change: look at 1989



(c) Claudia Sanchez Bajo, University of Kassel, 20181127

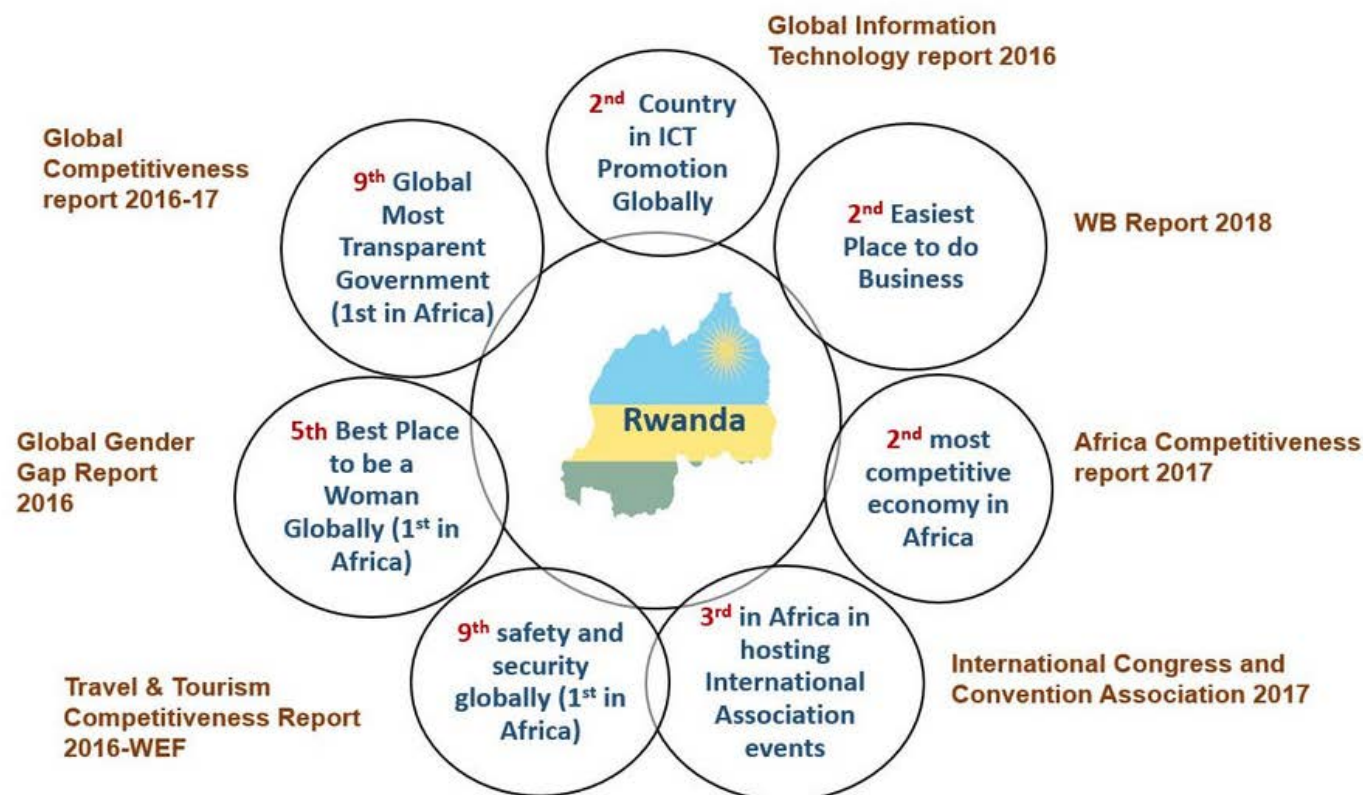




**Still fluid refugee regional flows with DRC worsening in 2017**

<http://www.unhcr.org/globaltrends2017/>

# Rwanda rankings 2016- 2017 – 2018



# BT report 2018

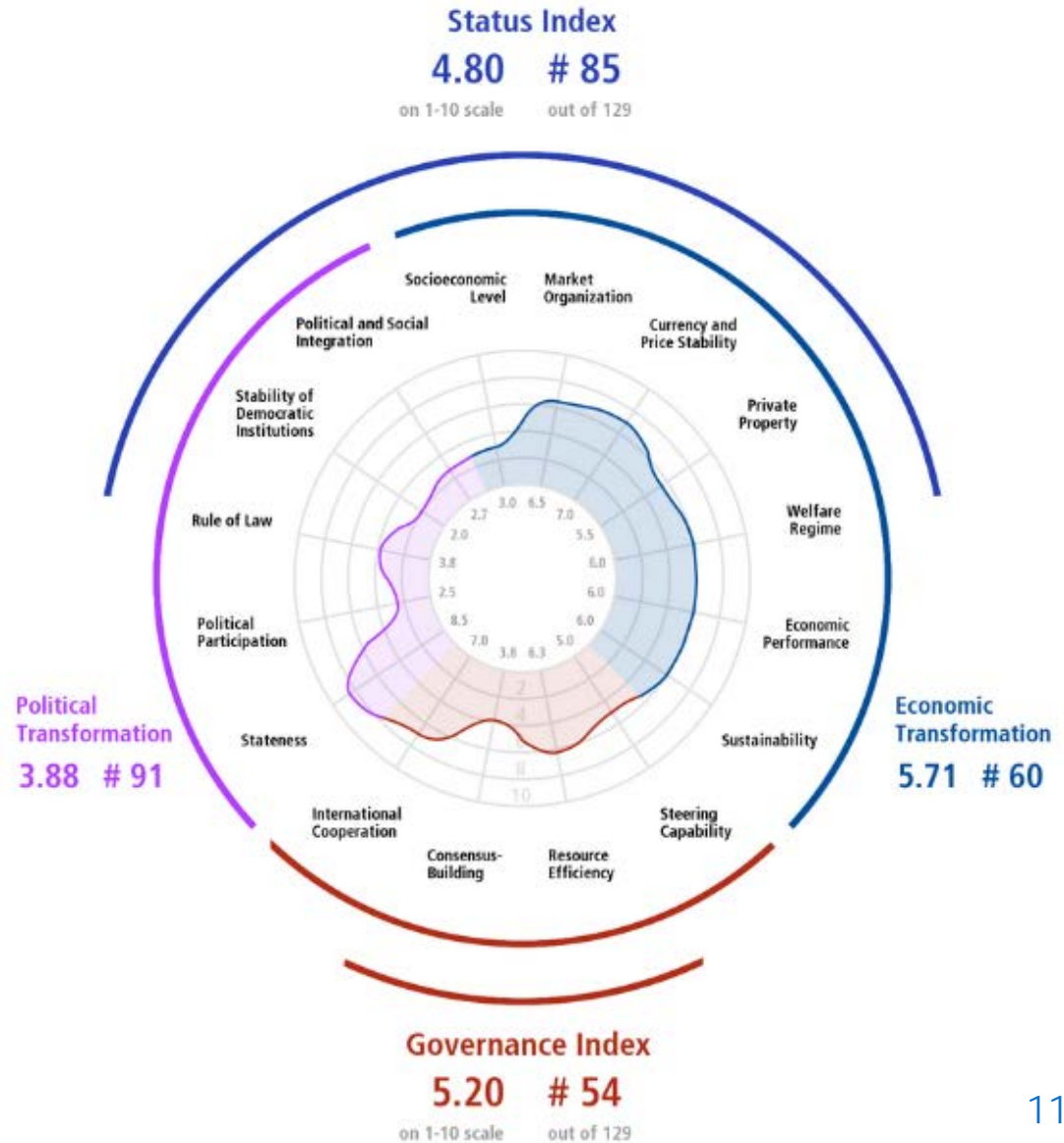
poverty rate  
dropped  
44% in 2011  
39% in 2014,

inequality Gini  
coefficient stood  
at 0.45 in 2018

Oct 12, 2018  
<http://www.worldbank.org/en/country/rwanda/overview>

(c) Claudia Sanchez Bajo, University of Kassel, 20181127

## BTI 2018 | Rwanda Country Report



# Peacebuilding and Conflict

Section 2

**There is no Post-conflict**

# Theory on Peace

**Galtung**

Positive Peace  
(cooperation) and  
negative peace  
(related to violence)

**PEACE**



EQUALITY  $\times$  EMPATHY



TRAUMA  $\times$  CONFLICT



**Peace leads to more peace (Spinoza, 2002 TP: Ch5, 4).  
Inner Peace flourishes in an environment free from fear,  
best through *mutual aid*.**

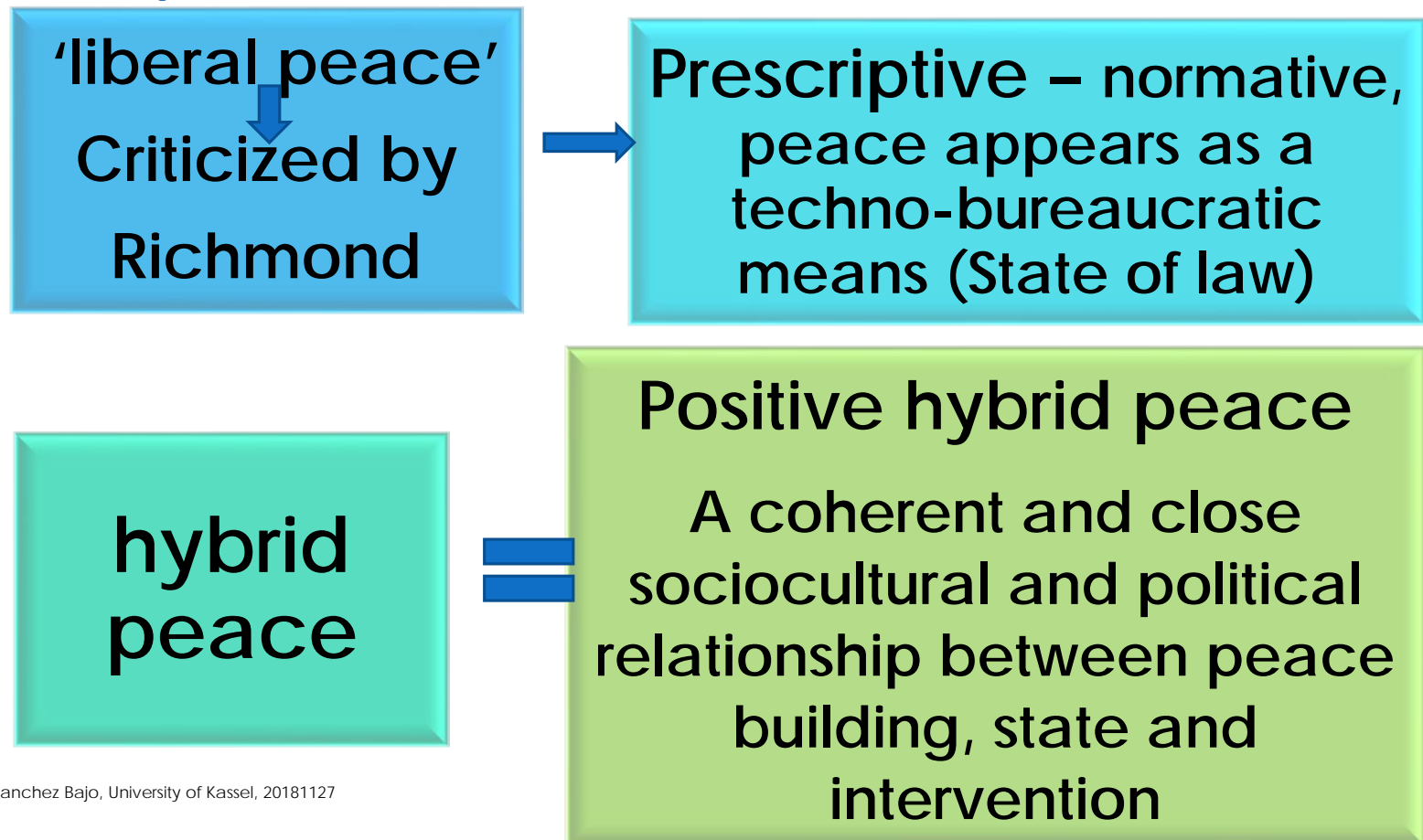
**For Spinoza, humans are social and rational beings who  
must be cooperators to survive and thrive (Spinoza, 2002,  
Ethics: Part IV, Prop.35, Corollary 2, S. 338).**

**Individuals always retain a “considerable part” of their  
own natural right; human beings are never fully  
integrated into any super-individual or state (TTP 17)**

## **SPINOZA – AGAINST HOBBS** **(1632–1677)**



# CRITIQUE OF "LIBERAL PEACE"



# Theory on Peace

**Lederach**

**Positive Peace  
needs all existing  
actors at all  
levels**

**5 principles**



**Comprehensive,  
interdependent,  
sustainable, strategic in  
focus, and building the  
Peace Infrastructure**

cooperatives are part of  
the  
peace infrastructure

# Conditions

1. all levels of leadership participate to
2. Sustain peace infrastructure : social spaces, los logistic mechanisms, institutions, that
3. sustain the process of change, the long term vision of sustainable positive peace.
4. This includes cooperatives
5. (but in which agenda and priority?)

# Conditions

1. All share a consensus about the terms and concepts, and
2. These concepts are inserted in the legal framework of the existing State, and the State of Law.

# Equally valid for the concept of cooperative, because

1. it must maintain a coherence of meaning, taking into account what already exists in the country and territory.
2. One can always innovate, but this must come from the members themselves, respecting the model, values and principles



**Allow Peace Building as a  
collective construction of  
action and sense.**

**That is felt as a legitimate  
and shared path**

# Cooperatives building a Peaceful Future

**Around 10000 cooperatives**

Section 3

# Genocide Memorial



## Iterambere ry'imibereho y'abatwaga n'ubukungu

U Rwanda rwatangiyeye gutegura ejo heza, rworohereza abantu kubona serivisi z'uburezi n'ubuvuzi kuri bose, hatezwa imbere ukwigira kw'abategarugori n'amakoperative hanazamurwa ubukungu binyuze mu ngamba nk'izo korohereza gukora ubucuruzi n'ibihugu byo mu muryango w'ibihugu by'Afurika y'i burarasirazuba, ingamba za gahunda z'imbaturabukungu zo kurwanya ubukene nka EDPRS, gahunda y'icyerekezo 2020 igamije kuzamura no guteza imbere imibereho y'abanyarwanda.

## Le développement social et économique

Le Rwanda a commencé à poser les bases d'un avenir pacifique, en élargissant l'accès à l'éducation et à la santé pour tous, promouvoir l'autonomisation des femmes et la création des coopératives, relancer l'économie à travers des initiatives telles que l'intégration commerciale dans la Communauté des Pays d'Afrique de l'Est (EAC), la Stratégie de développement économique et de réduction de la Pauvreté (appelé l'EDPRS en Anglais), la vision 2020 et l'amélioration des conditions de vie des Rwandais.

## Social and Economic Development

Rwanda has begun laying the foundations of a peaceful future, expanding access to education and healthcare for all, promoting women's empowerment and cooperatives, and boosting economic growth through initiatives such as trade integration with East African Community, Economic Development for Poverty Reduction Strategy (EDPRS), and Vision 2020, aiming at empowering and developing Rwandans' living conditions.

# Dimensions of peacebuilding AMOHORO COOPERATIVE

- Resilience – Solidarity
- Personal - Marriage
- Business – Sustainability
- Dwelling and housing
- Family – Children
- Survivors – Trauma
- Future - Projects





# Dimensions of peacebuilding MARABA COOPERATIVE



beverage company in Rwanda, it produces several local beers like Primus and Mützig, as well as international brands like Amstel, Guinness and a range of soft drinks.



## Nyamyumba Sector

**COOPAV Bralirwa Go Fishing Experience**, an eco-tourism activity opportunity to enjoy a traditional night time fishing experience with a local fishermen's co-operative called COOPAV. Look for them around Bralirwa, in the Gisenyi day, 8km from the town centre.



## The Nyamyumba Hot Springs

is thought to have multiple medicinal and curative virtues. The Hot Springs can be found about 7km from the town centre on the way to Kigufi. This site is a great place to unwind and take a swim.



## The Residence of Bishop Bigirimwami

was originally constructed in 1947 by the Belgians and later renovated by Bigirimwami, the first African Catholic bishop. This beautiful residence has a scenic view of Lake Kivu. Accommodation and camping facilities are provided by the guest house La Maison St Benoit of Kigufi, which is managed by Catholic sisters.

**1918 First World War graves**, 2km from Gisenyi city centre



# Dimensions of peacebuilding ADARWA COOPERATIVE

- Platform thinking
- Investment, infrastructure
- Opportunities, Trainees
- Future projects
- Need to devise mediation mechanisms



# THE SACCOS: Credit Cooperatives

The opportunity segment	The development segment	The poor
<p>Represents 341 000 adults with most of the characteristics of the 'ideal candidate' for formal inclusion. Individuals in this market segment are most likely to offer new opportunities for formal financial inclusion.</p>	<p>Represents 795 000 adults who possess some of the characteristics of the 'ideal candidate' for formal inclusion.</p>	<p>Represents 1.4 million adults lacking all the characteristics of the 'ideal candidate' for formal inclusion. Individuals in this market segment do not seem very likely to offer new opportunities for formal financial inclusion in the short or medium term</p>
<p>Saving happens in groups, at home and through buying assets</p>	<p>Saving more likely to be in groups and at home rather than through buying assets</p>	
<ul style="list-style-type: none"> <li>• Lack trust in SACCOs but have</li> <li>• High level of trust in banks</li> </ul>	<ul style="list-style-type: none"> <li>• Lack trust in banks but have</li> <li>• High level of trust in SACCOs</li> <li>• Proximity to SACCOs is better than proximity to banks</li> <li>• Education level of individual lower than ideal</li> <li>• Education levels of household heads lower than ideal</li> </ul>	
<p>Most individuals in this segment earn an income through farming, farm work and piece work but this segment is more likely to also include business owners and individuals who earn a salary/wage from a business</p>	<p>Mostly individuals in this segment earn an income through farming, farm work and piece work</p>	

# Cooperatives build positive peace, by raising equality and solidarity, helping overcome trauma and channel conflict

**First expectation was:**

- Post-direct violence, role to reintegrate displaced IDPS, refugees and ex-combatants, through income generation and job creation.

**Yes, but ... later and more**

- Role : transformative, where peace is a space, a habitat, in which the community, all beings, life, can fully develop in dignity.



# KEY POINTS

- Cooperatives appear to provide refuge, safety, partnerships, pride, voice, solidarity, empathy
- Cooperatives facilitate agency and resilience, raise equality
- Relation to policy is not one-way – smooth
- Cooperatives did not appear in ‘post-conflict’ but later, once people knew each other, a passage that was promoted by government policy and with support from international organizations.



# Key Points 2

1. **Social capital** : democratic participative learning
2. **Endogenous Synergy** : productive processes of co-construction able to drive local development and social change
3. **Constellation of networks** : capacity for institutional arrangements
4. **Openness to others and to possibilities: innovation and tradition mix, sustainability concerns about diversity**



# Development Models: Govt as GRAVITATIONAL CENTRE OF POLICY

- Developmental Patrimonialism ?
- Diasporas role
- Asian Tigers and cooperatives
- India cooperatives' districts
- Green revolution and climate change?
- Rene Dumont (French-on Asia – coops-ecology)





# Cooperatives in Peacebuilding

Contextualised by connections, flows, structures, scarcity of resources, practices, perceptions and beliefs.

1. Peacebuilding as post-conflict and transitionalism? (rebuilding, de-escalation, demobilization, restart agriculture and markets).
2. Peacebuilding as identity and agency (protection, overcoming anomie (Durkheim and Merton) .
3. Peacebuilding as resilience, absorptive capacity, cyclic life dynamics, transformative entry points (dynamic rhizomes – Deleuze & Guattari).

The End

**Thank you!**

**[claudia.sanchezbajo@gmail.com](mailto:claudia.sanchezbajo@gmail.com)**

سلام

Paix

Paz

Pax

Pace

Amahoro  
o

Frieden

Vrede

мир

שלום

和平

शांति

cümelen

*PEACE*